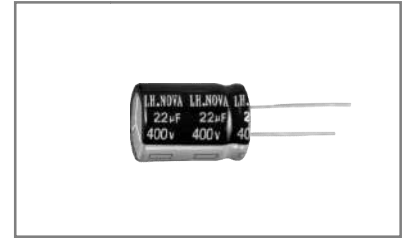


ARV

ARV Series Aluminum Electrolytic Capacitor



◆ Feature

- \* : 130°C 5000  
Load life:130°C 5000 hours.
- \*  
High temperature.
- \* AEC-Q200  
Compliant to the AEC-Q200 Directive.
- \* RoHS  
Compliant to the RoHS Directive.

◆ Application

- \*  
Ideally suited for automobile modules switching power supplies, and other electronic products.

◆ Part Number

8	2	2	0	L	F	M	A	A	1	2	A	V	N	0	3	B	0	
	②			③		④			⑤		⑥		⑦	⑧		⑨		⑩

Code	Type	Code	Voltage	Code	Dimensions DxL(mm)	Code	Trademark	Code	Internal Code
8	Product	LO	4	0511	5x11	N	LH.NOVA	3B	130°C 130°C Automotive electronics cartronics
		LA	6.3	AA12	6.3x12				
		LB	10	0812	8x12				
		LC	16	1020	10x20				
		LD	25	AB20	12.5x20				
		LE	35						
		LF	50						
		LG	63						
		MA	100						
		VA	400						

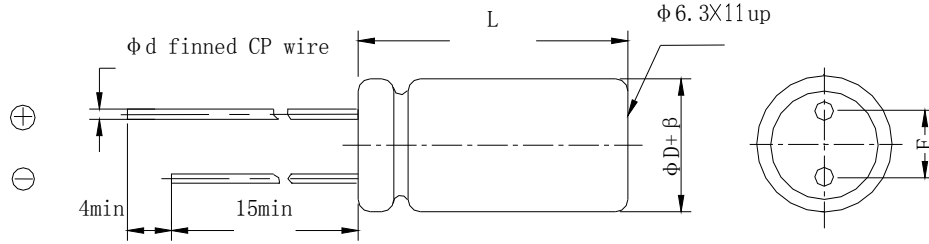
  

Code	Lead Forming Type
0	Bulk

P original  
type(vertical) tape

Code	Nominal Capacitance	Code	Tolerance	Code	Series	Code
1R0	1uF	K	±10%	AV	ARV	0
2R2	2.2uF	V	± <sup>20</sup> / <sub>10</sub> %			
221	220uF	M	±20%			

**Product Structure**


(mm)	±0.5			±1.0				
D(mm)	5	6.3	8	10	12.5	16	18	22
F±0.5(mm)	2.	2.5	3.5	5.0		7.5		10.0
d±0.1(mm)	0.5		0.6			0.8		
L(mm)	11,12	12,16	12,16,	16,20,25	16,20,25,30,35	20,25,30,35,40	25,30,35,40	
	L±2.0							

**Main specifications**

	Performance Characteristics								
Rated Voltage Range	10~100V.DC	160~450V.DC							
Operating Temperature Range	-40 ~+130	-40 ~+130							
Nominal Capacitance Range	1~4700μ F	4.7~220μ F							
Capacitance Tolerance	±20% M +25°C 120Hz								
Leakage Current (25°C)	(V) Rated working voltage	10~100	160~450						
	Leakage current	2 I 0.01CV 3(μA), After 2 min. I 0.01CV or 3(μA), Whichever is greater.	2 I 0.03CV+25(μA) After 2 min . I 0.03CV+25(μA)						
	C	μF Nominal Capacitance in μF							
	V	V Rated working voltage in V							
DF Dissipation Factor	(V) Rated working voltage	10	16	25	35	50	63	80~100	160~450
	DF(MAX) (25°C, 120Hz)	0.35	0.22	0.20	0.17	0.15	0.12	0.10	0.15
		1000μF	1000μF	DF	0.02				
	For capacitance of more than 1000μF, add 0.02 for every increase of 1000μF.								

Surge Voltage

(V) Rated working voltage	10	16	25	35	50	63	100	160	200	250	350	400	450
------------------------------	----	----	----	----	----	----	-----	-----	-----	-----	-----	-----	-----

**Dimensions and ripple current**

Cap/μF \ WV/V	10		16		25		35		50		63		100	
	(1)	(2)	(1)	(2)	(1)	(2)	(1)	(2)	(1)	(2)	(1)	(2)	(1)	(2)
10									5x11	40	5x11	45	6.3x12	60
22									5x11	40	6.3x12	90	6.3x12	95
47									5x11	95	6.3x12	100	8x16 10x12	200 200
100									8x12	480	10x12	520	10x20	550
150									10x12	530	10x16	560	10x16	600
220					10x12	480	10x12	580	10x16	680	10x20	700	10x20	800

(1) 外形尺寸 Case Size D×L(mm)

(2) 最大允许纹波电流 Max allowable ripple current (mA rms +130℃,100kHz)

Cap/μF \ WV/V	160		200		250		350		400		450	
	(1)	(2)	(1)	(2)	(1)	(2)	(1)	(2)	(1)	(2)	(1)	(2)
1.0							8x12	50	6.3x12 8x12	20 54	8x12	58
1.2							8x12	53	8x12	65	8x12	65
1.5							8x16	73	8x12	73	8x16	70
1.8							8x16	75	8x12	75	8x16	74
2.2					8x12	65	10x16	70	10x16	73	10x16	64
2.8			8x12	65	8x12	65	10x16	90	10x16	80	10x16	77
3.3	8x12	70	8x12	75	8x12	80	10x16	100	8x12	78	10x20	80
4.7	8x12	70	8x16	80	8x16	85	8x12 10x20	95 105	10x16 10x20	100 100	10x20	110
5.6	8x16	82	8x16	148	10x16	150	12.5x20	165	12.5x20	165	12.5x20	144
6.8	8x16	96	8x16	160	8x12 10x16	95 169	10x20 12.5x20	190 200	10x16 12.5x16	100 225	12.5x20	175
8.2	10x16	183	10x16	203	10x16	203	12.5x20	190	12.5x20	185	12.5x20	100
10	10x16	223	10x16	230	10x20	250	12.5x20 12.5x25	250 250	12.5x25	280	12.5x25	225
15	10x16	340	10x16 10x20	300 335	10x20	327	12.5x25	335	12.5x20 12.5x25	240 335	12.5x25	295
22	10x20	400	12.5x20	430	12.5x20	430	16x25	450	16x25	480	16x30	420
33	12.5x20	480	12.5x20	500	12.5x25	530	16x30	535	16x30	500	18x30	500
47	10x20 12.5x25	450 590	12.5x25	650	16x25	690	18x30	700	18x35	750	18x35	615
68	16x25	750	16x25	750	16x30	780	18x40	900	18x35	800	18x40	730
100	12.5x25 16x25	600 960	16x30	1100	18x30	970						
150	18x30	1050	18x35	1350	18x40	1200						

(1) 外形尺寸 Case Size D×L(mm)

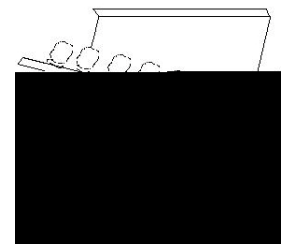
(2) 最大允许纹波电流 Max allowable ripple current (mA rms +130℃,100kHz)

◆ **Packaging**

\*

Taped packaging quantity

D(mm)	Qty. (Pcs)	L( ) 22mm	L( ) 25±2mm
		LxWxH(mm)	LxWxH(mm)
5	2000	328x235x50	328x235x57
6.3	1500		
8	1000		
10	600		
12.5	400		
16	250		
18	200		



\*

Bulk packaging qua

D(mm) Diameter	L(mm) Length	Quant
4		
5		
5		
6.3		
6.3		